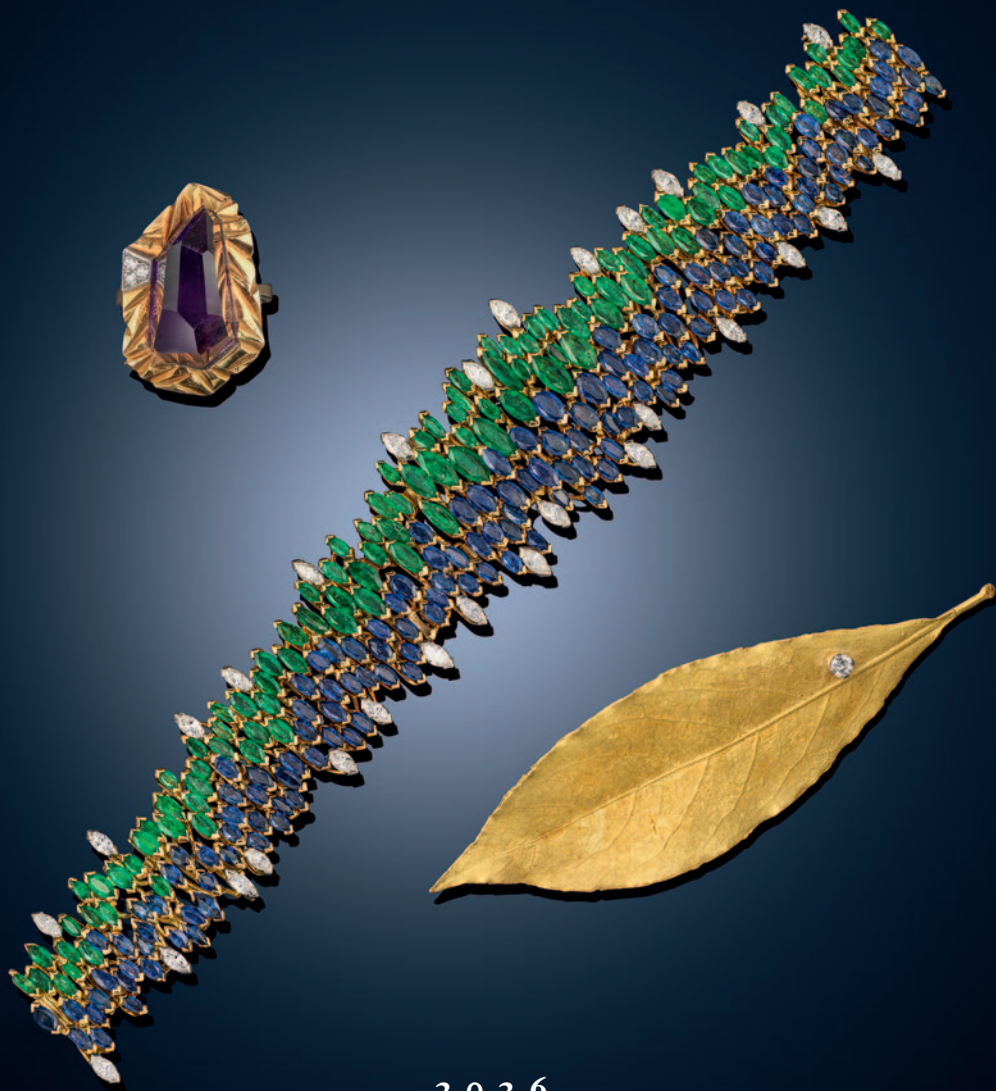
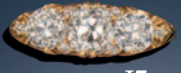
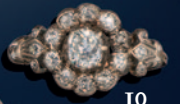


M·C·K·E·N·N·A & C·O
FINE ANTIQUE & PERIOD JEWELLERY



2026



1
2
3
4
5
6
7
8
9
10
11
12
13
14
15
16
17
18
19
20
21



22

23

24

25

26

27

28

29

30

31

33

34

35

32

36

37

38

39

32

42

41

43

45

44

40

46



47



48

50



49



52



53



54

55



56



57



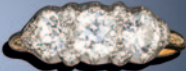
58



59



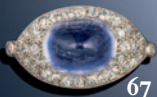
60



61



62



67



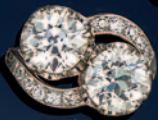
69



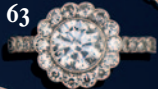
68



64



65



63



70



72



73



66



71



74



75



J.E. Caldwell



76



77

78

79

80

81

83

84

85

82

87

86

88

91

89 *Raymond C. Yard*

90

92

93

97

96

95

94

98

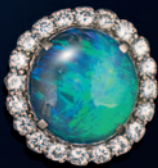
99 *J.E. Caldwell*

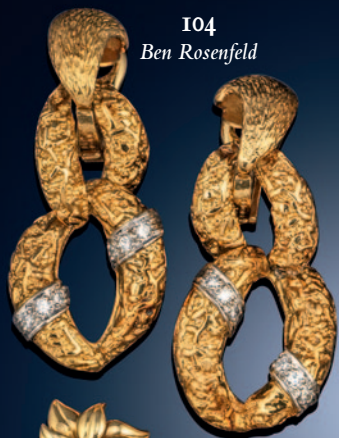
102

101

100

103





I04
Ben Rosenfeld



I05
Mario Buccellati



I06

I07



I08



I09



I10



I11



I13



I14



I15 *Ben Rosenfeld*

I12 *H. Stern*



I18
Boucheron Paris



I16 *Mario Buccellati*



I19 *Andrew Grima*



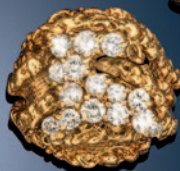
I20 *Ben Rosenfeld*



I17



I22



I21



I23



I24



I25
Alan Martin Gard

I26 *Boucheron Paris*



I27
Tiffany & Co

I28
Asprey & Co





120

130

132

133 Graff

131

134

135

136
Tiffany
& Co

137

138

139

140

141

142

143

144

147

148

149

150

145

151

152

146

156

153

157

155

154

159

158

160

161

162

M·C·K·E·N·N·A & C·O

FINE ANTIQUE & PERIOD JEWELLERY

28 Beauchamp Place, Knightsbridge, London SW3 1NJ

Tel: 020 7584 1966

Email: info@mckennajewels.com | www.mckennajewels.com

Follow us on Instagram @mckennajewels

Please refer to our website for current opening hours



Certificated diamonds supplied | Jewellery purchased | Valuers for insurance & probate

Members of The National Association of Jewellers | Members of the Association of Art & Antiques Dealers

Corporate members of Gem-A The Gemmological Association of Great Britain



LAPADA